



ILIAD 53S



ILIAD 53S

MAIN DIMENSIONS

With a sport sedan silhouette, outstanding space, economy and performance, the ILIAD 53S is ideal for unrestricted cruising throughout the world's waterways.

This impressive motor yacht enjoys outstanding living space, a contemporary galley, dining for 6-8 people, a luxuriously large master suite, and class-leading storage, while the aft cockpit is comprehensively equipped for outdoor entertaining.

The ILIAD 53S is powered by 440hp Volvo or Yanmar engines (Cummins optional) delivering a top speed of 21 knots (lightship), and cruising long range at low speeds will afford more than 2,500 nautical miles.

LENGTH:
16.37 M | 53.70 FT

BEAM:
7.63 M | 25 FT

DRAFT AT FULL LOAD:
1.22 M | 4 FT

DISPLACEMENT (LIGHTSHIP):
26,000 KG | 57,320 LBS

RANGE:
2,500NM

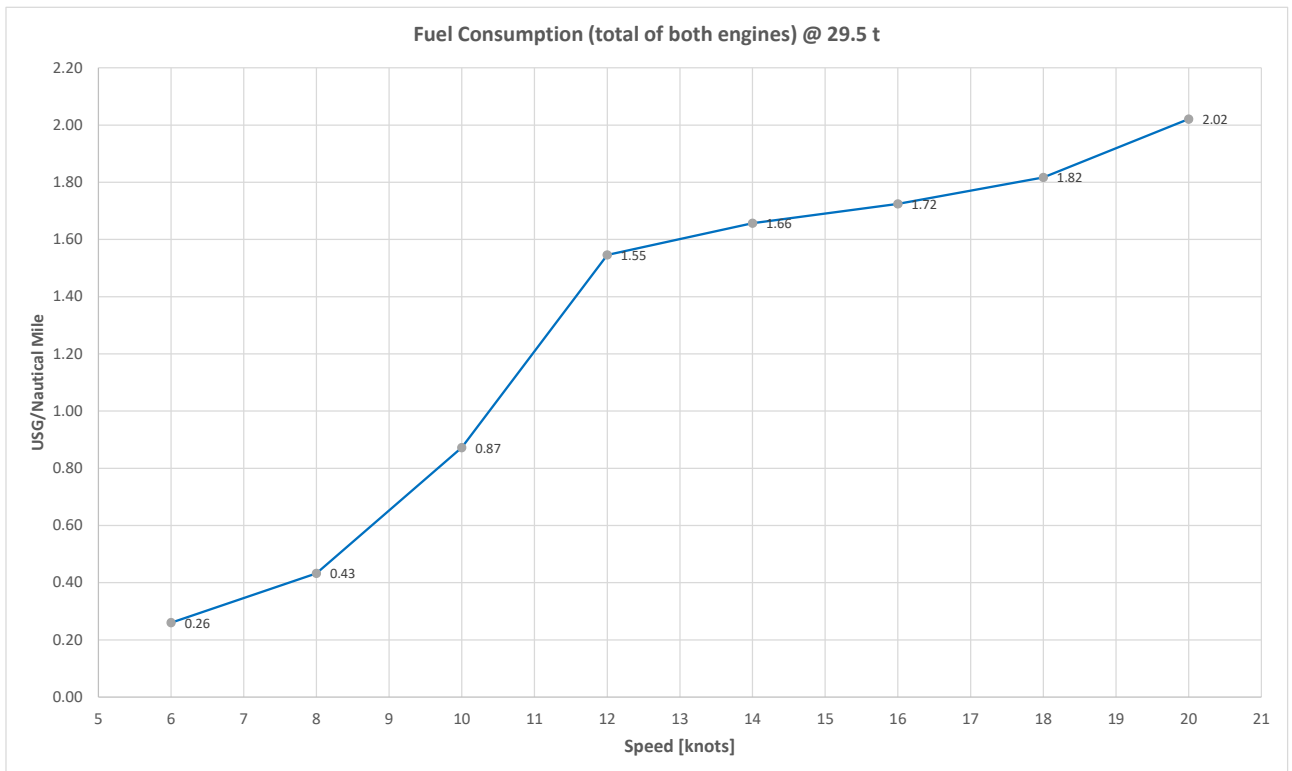
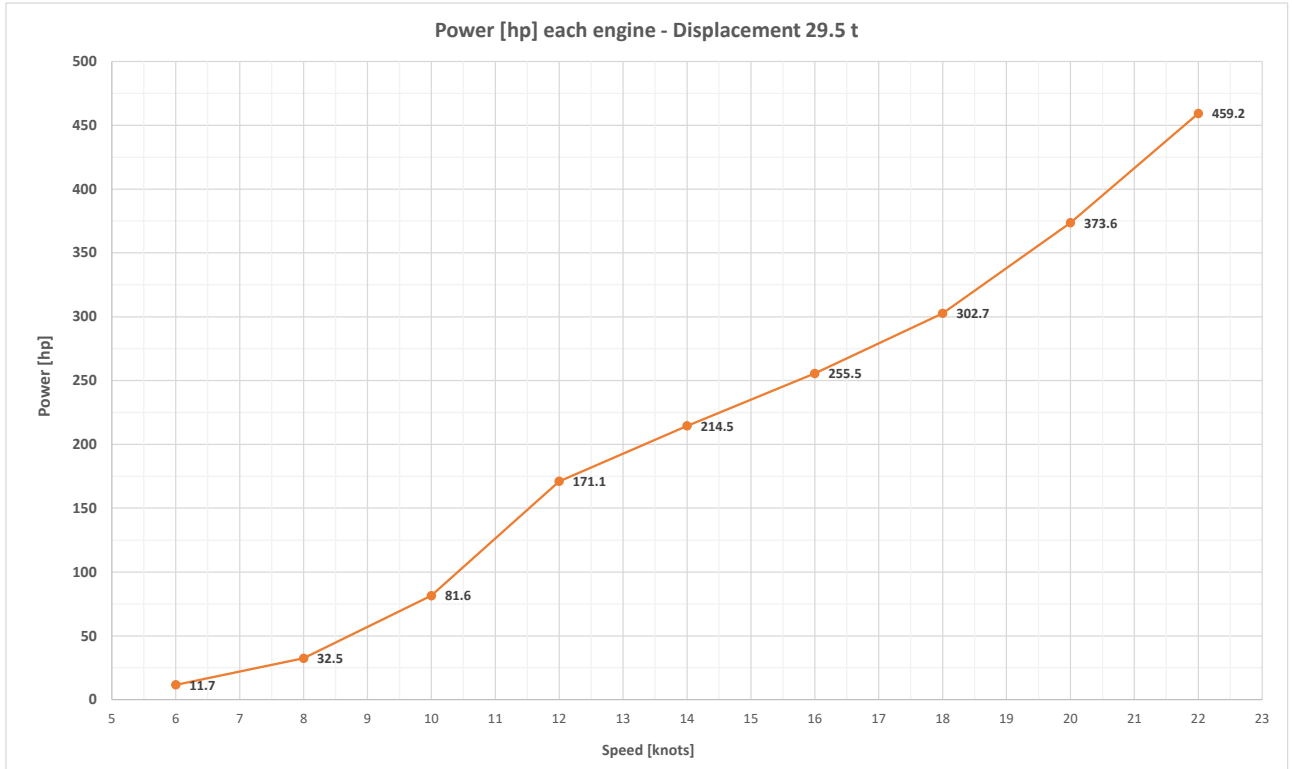
FUEL TANKS CAPACITY:
3,500 L | 924 GAL

WATER TANKS CAPACITY:
800 L | 211 GAL

HOLDING TANKS CAPACITY:
GREY 250 | L 66 GAL
BLACK 250 | L 66 GAL

CERTIFICATION:
CE A-12 | CE B-12
CE C-20 | CE D-30

CONSTRUCTION BUILT TO
CE AND ABYC GUIDELINES.



STANDARD EQUIPMENT

STRUCTURAL MATERIALS

- Hull bottom and sides in sandwich of GRP and PVC core (density 80-100 kg/m³).
- Main deck and deckhouse in sandwich of GRP and PVC core (density 60 kg/m³).
- Hull lamination all in vinylester resin.
- All other laminates in polyester isophtalic resin.
- Construction of main laminates by infusion.
- GRP stiffeners laminated on PVC formers by hand lay-up directly to the shell laminates.
- DSM gelcoat, white colour.
- Lower deck structural cabin sole in GRP sandwich.
- Watertight and structural bulkheads in in sandwich of GRP and PVC core (density 80 kg/m³). Partition bulkheads in marine plywood. Bulkheads fastened to shell by lamination.
- Independent fuel tanks in aluminium 5052.
- Independent freshwater tanks in aluminium 5052.
- Grey and black water tanks in aluminium 5052.

ENGINE ROOM AND MARINE SYSTEMS

- 2 X 440HP Yanmar or Volvo engines.
- Bow thruster (1).
- Onan 13.5 KW generator includes muffler and gas water separator.
- Air conditioning 65,000 BTU Climma CWS (with inverter).
- Engine rooms with access from hatch on main deck.
- ER insulation materials Pyrotek Sorberbarrier.
- Bonding by copper strip 4 x 32 mm.
- 2 x shaft drive gearboxes.
- 2 x shafts in stainless duplex steel. GRP sterntube.
- 2 x rudders in stainless steel 316L.
- 2 x propellers (Cu3), 4 fixed blades.
- Sea Star hydraulic helm.
- Mufflers for main engines and generator.
- 2 x ER air inlets with moisture eliminators.
- 2 x automatic fire-suppression system, Seafire. With heat sensor and alarm.
- 2 x air blowers for ER forced ventilation.
- 4 x fire dampers with remote shut-off. 2 x engine fuel filters.
- Genset fuel filter.
- Fuel transfer pump.
- Fuel hose, Trident 365.
- 8 x bilge pumps throughout the boat, with high-water alarm.
- 1 x 60lts/16gal water heater.
- 2 x freshwater pumps.
- 3 x grey water sump pumps and tank.
- Grey water macerator pump.
- Black water macerator pump.
- 2 x deck wash points (cockpit, bow).
- 2 x ER cameras.
- 1 x docking camera.

ELECTRONICS

- Autopilot, with control head (Raymarine P70).
- 2 x multifunctional display Raymarine Axiom Pro 16" (1 x flybridge and 1 x main deck helm).
- Raymarine i70, echo sounder, GPS RS 130, including Raymarine backbone and cables.
- AIS (with antenna) VHF (with antenna).
- Raymarine fish-finder sensor CP 100 + CPT 120.
- Raymarine Radar FLIR Quantum Q24C.
- Chain counter.

ELECTRICAL SYSTEM

- Solar panels 2600w with regulating/charging system.
- Bonded electrical system with ground plate.
- 24VDC, 220/110VAC ship systems.
- 2 x engine AGM gel-type start batteries, 150 Ah.
- 1 x generator AGM gel-type start battery, 150 Ah.
- 24V 600 ah lithium house bank.
- Inverter/Charger Victron Multiplus 24/5000/120.
- Converter Victron Orion 24/12-40.
- Vimar switches.
- Circuit breakers and fuses BEP.
- Quick Spa interior/exterior LED lights.
- Hella Marine navigation and anchor lights.
- Main distribution switchboard panels AC/DC.
- 2 x shore power cord 50A (Marinco).
- 220V/110V sockets (Vimar) throughout.

EXTERIOR OUTFITTING

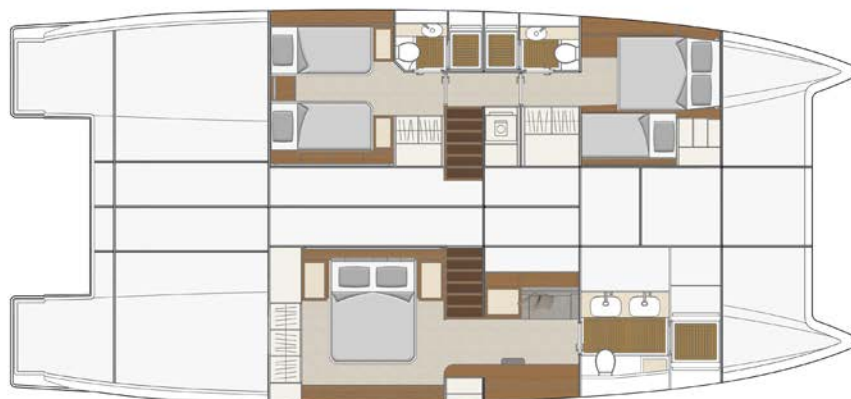
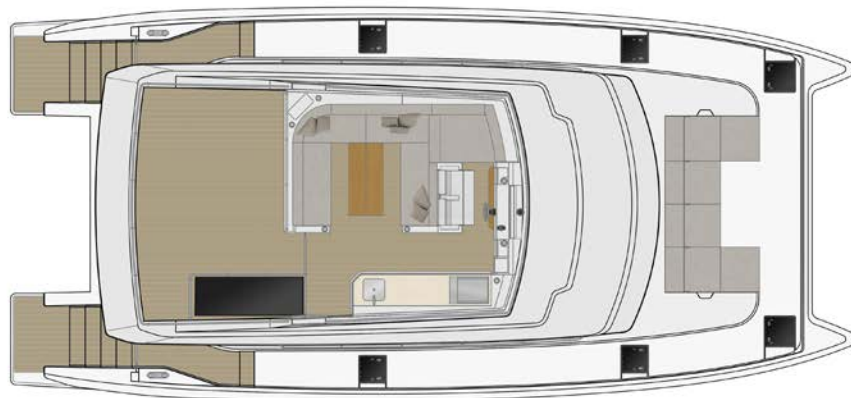
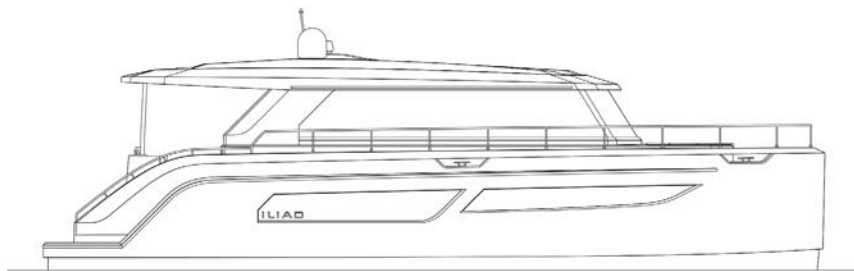
- Aft cockpit folding-edge table in teak.
- Horn 24V.
- Searchlight with remote dash-mount control.
- TV antenna, Glomex.
- Fenders and mooring lines x 6.
- Primer coat, antifouling (black).
- Propspeed paint to shafts and propellers.
- Hull structural keel.
- Hull portlights Lewmar flush Mitre size 1.
- S/S cap rub-rail on hull side.
- Deck hatches Lewmar Mitre flush hatch size 44.
- Large windshield hatch on main deck.
- S/S mooring cleats 13", 2 x S/S bollards 15".
- Vertical windlass Quick, 2000W 24V, with deck switches.
- S/S 316L handrails.
- Cockpit sern gates in stainless steel.
- 2 x hot/cold shower faucets, fitted at port and starboard transom steps.
- Swissway swim ladder with Carina railing telescopic 3 +2 in transom hidden and flush mounted.
- 2 x stainless steel bow pulpits with teak seats.
- All outdoor cushions in Sunbrella fabric.
- All GRP non-skid areas molded into the laminate.
- GRP hard-top with S/S navigation mast.
- Synthetic teak (cockpit, stairs and boarding platform).
- Lewmar anchor (DTX 40kgs/88lbs) with 60m/196ft x 10mm/3'8" short link chain.
- Stainless steel davit lifting system with electric winch (250kgs).
- Cockpit cabinet with storage.
- 37L stainless steel bin in cockpit cabinet.
- Stainless steel electric grill with hatch, in cockpit cabinet.
- Cockpit dining table in teak timber.
- 6 x Aqualuma underwater lights (blue or white).

INTERIOR OUTFITTING

- Main deck helm station with engine instrumentation, windscreen wiper and a double Besenoni Dragonfly adjustable helm seat (fore and aft adjustment).
- Helm station engine controls and displays.
- Tilt mechanism steering wheel.
- Magnetic compass.
- Side shelf/office desk.
- Windscreen wiper.
- Fusion entertainment system (2 speakers in saloon and cockpit with remote, amplifier and subwoofer).
- TV electric lift in saloon (suitable for 50" TV, not standard).
- Fridge-freezer.
- Induction cooktop hob.
- Oven-microwave combination (galley).
- Draw fridge in cockpit.
- S/S 316L interior handrails.
- Solid Surface galley and bathroom countertops (LG HI-MACS).
- BLUM drawer systems and cabinet hinges.
- Parquet laminate flooring on main deck galley/ dinette area.
- Teak flooring in all bathrooms.
- Timber veneer furniture and interior decorations.
- Ceiling and wall panels in synthetic leather fabric.
- Sofas and seats upholstery in synthetic leather (Ultraleather by Ultrafabrics).
- Saloon coffee table with two ottomans.
- Dinette table with two stools. Drawer storage beneath dinette sofa.
- Liquor cabinet fitted into galley counter (if choosing Galley Option A).
- Dark leather at main deck helm station and above TV cabinet.
- Manual blinds on all hull windows.
- Electric blinds on main deck windows (excludes sliding door to cockpit).
- Memory foam mattresses.
- Galley SS sink with water faucet (hot/cold).
- Hood above hob.
- Air extraction fans in all bathrooms.
- Planus electric toilets with macerator.
- Ceramic washbasins.
- Bathroom and shower fixtures (Kohler).
- Combination washer/dryer.
- Separate shower stall with teak grating in each bathroom.
- Carpet in lower decks and main deck forward saloon.

OTHER

- Transport cradles.
- Launching & export formalities.
- Shrink wrapping in preparation for shipping.
- Owner's Manual.

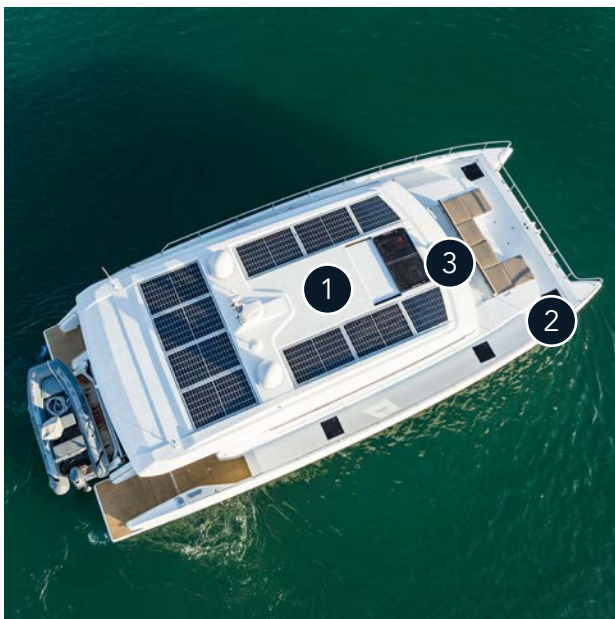


* CONTACT YOUR DEALER FOR MORE LAYOUT OPTIONS

EXTERIOR



- 1 Large hardtop offering great protection from the elements. 2,600watt solar panels and antennas on top.
- 2 Expansive saloon windows for natural light and panoramic views. Affords excellent visibility when driving.
- 3 Large storage lockers in each bow. These can also be optioned as a crew cabin.



EXTERIOR

- 1 2,600 watts framed solar panels fitted to hardtop.
- 2 Large storage lockers in each bow. These can also be optioned at a crew cabin.
- 3 Raised C-shaped sunbeds with reclining backrests and large storage locker under the centre.

EXTERIOR



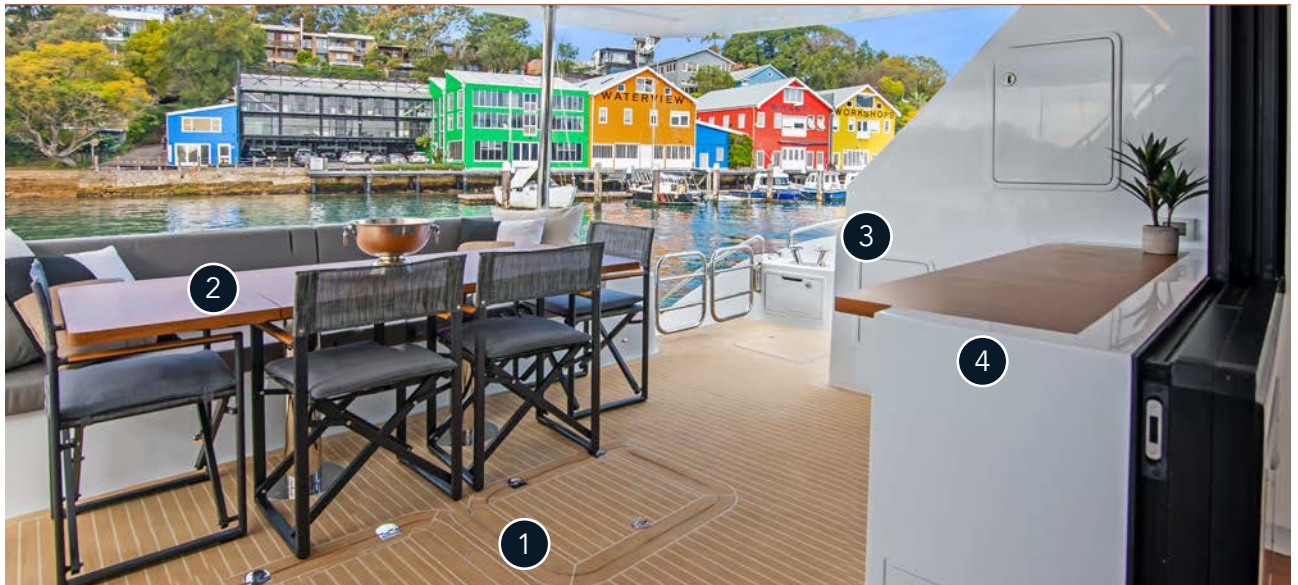
- 1 Wide stern platforms with swim ladder and shower on starboard side.
- 2 Optional hydraulic swim platform for launching and retrieving tender up to 450kg/880lbs. (Standard spec is stainless steel davit lifting system with electric winch 250kg).
- 3 Cockpit stern gates for optimal safety, particularly with children and pets onboard.



EXTERIOR

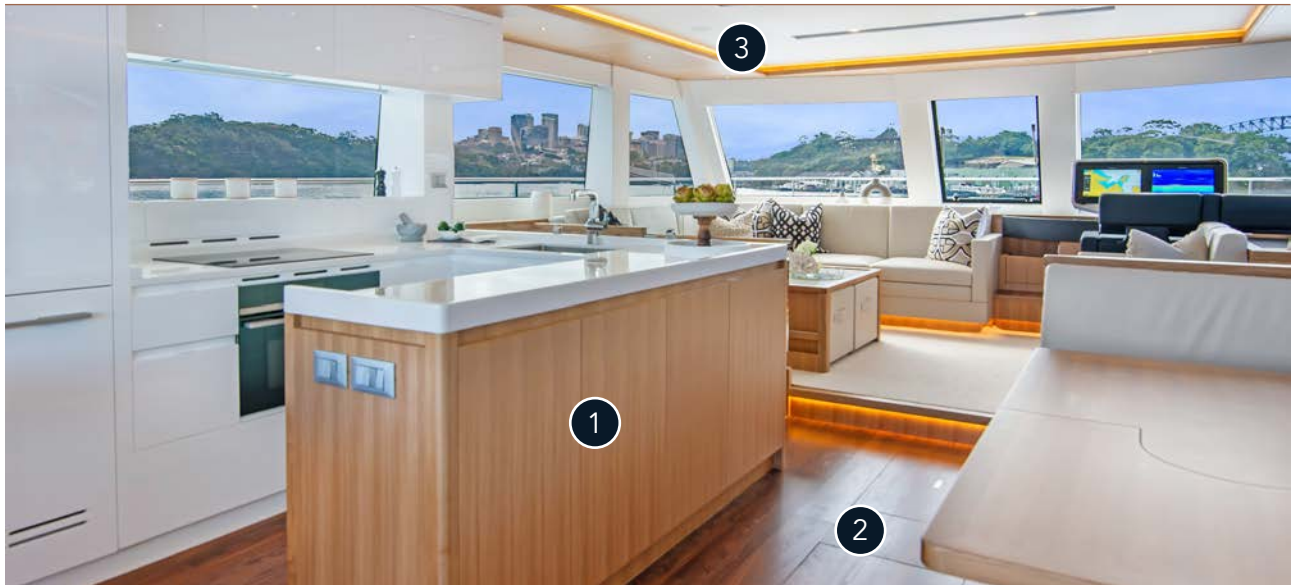
- 1 Wide sidedecks (70cm/27") with handrail on superstructure and high handrail on bulwark.
- 2 Raised bulwark 1ft off the deck for increased safety when moving around the boat.

AFT COCKPIT



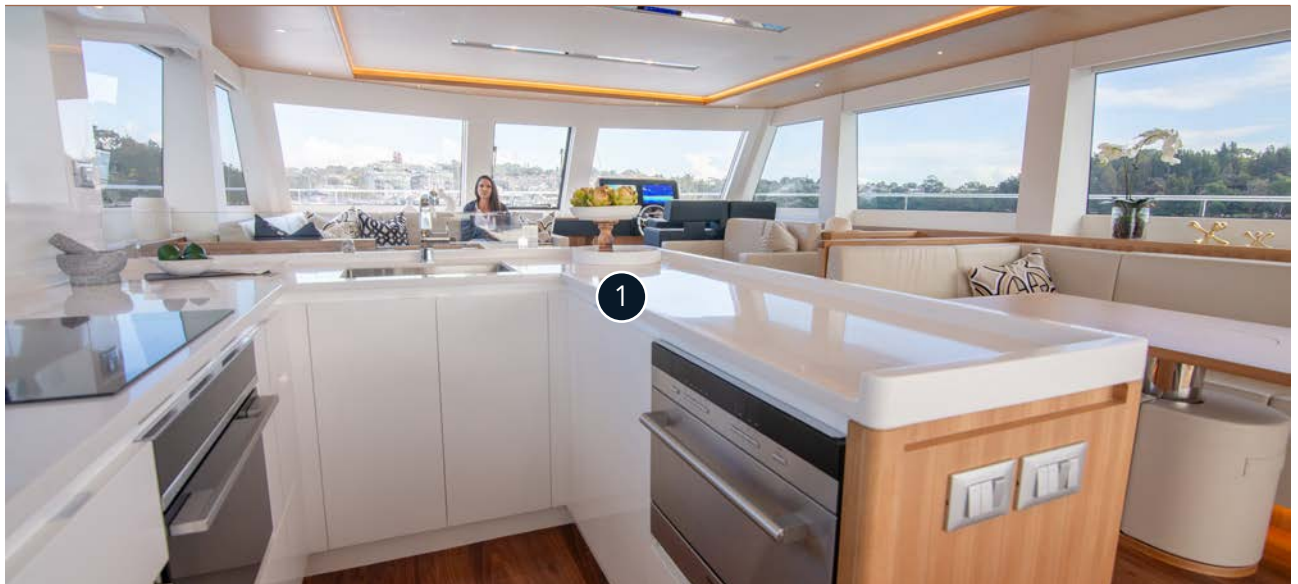
- 1 Two large storage hatches under the floor in the centre of the cockpit with 1m/3ft cubed storage space each.
- 2 Large fold-out teak cockpit table that can accommodate 10 people.
- 3 Storage locker.
- 4 Servery/bar flowing from the galley into the cockpit.

INTERIOR



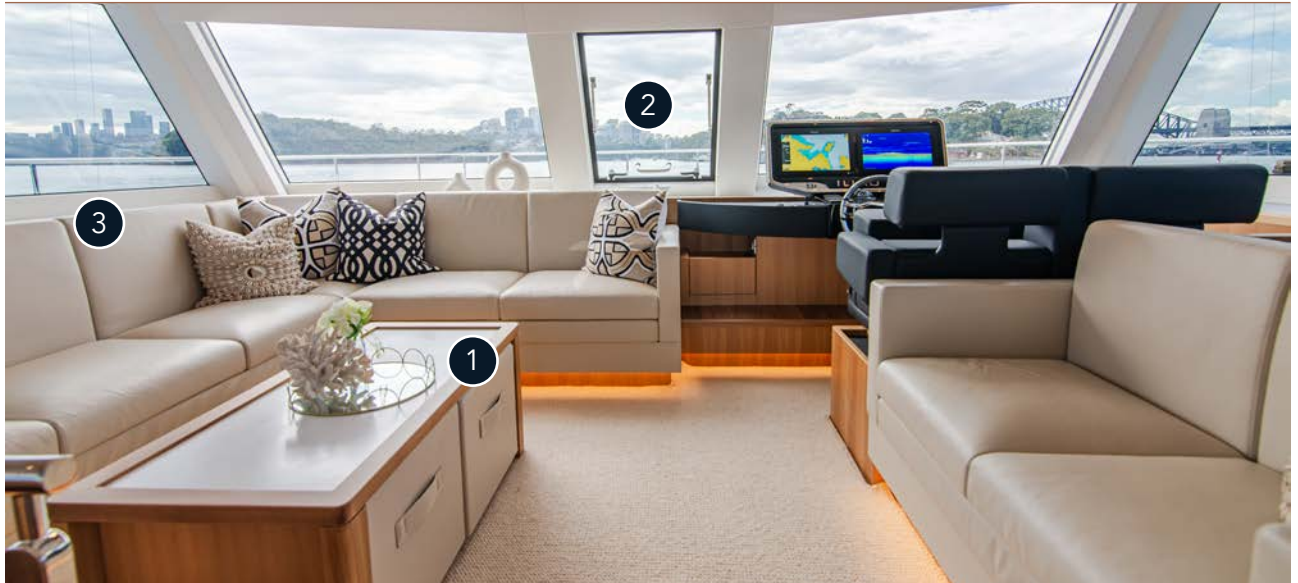
- 1 Main deck saloon with galley to port and dinette table to starboard with under-table dining stools to seat six.
- 2 Large storage hatches in the saloon floor and under the carpet in the forward lounge area.
- 3 Ambient indirect lighting and feature ceiling panels.

GALLEY



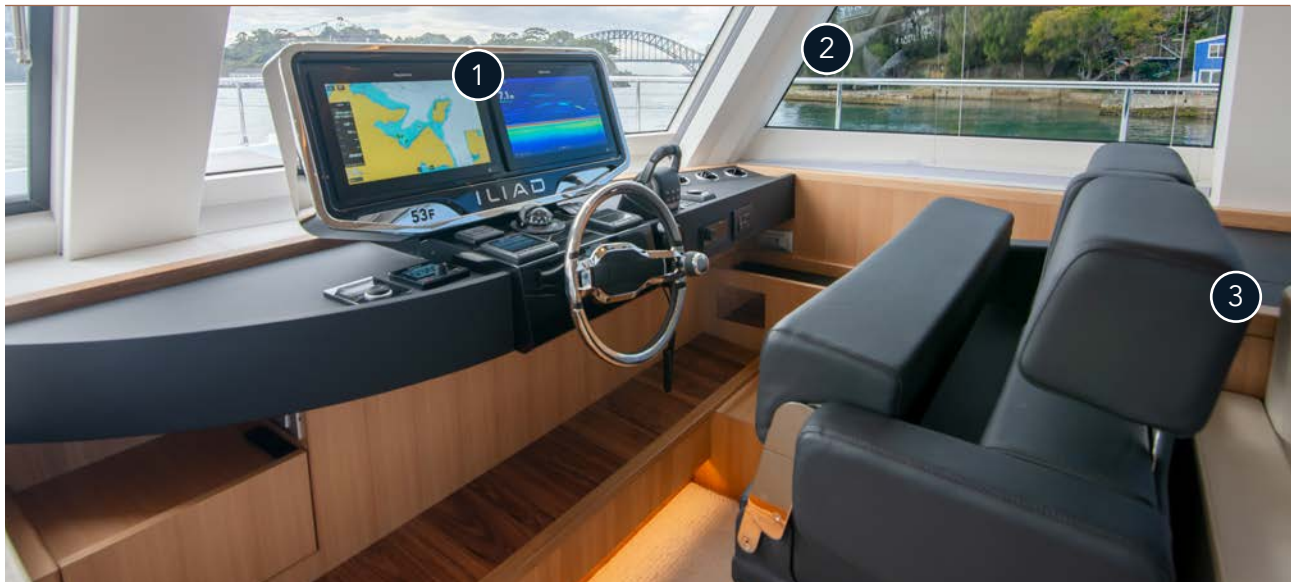
- 1 Galley option A with large 412L double-door fridge, combination oven/microwave, 4-burner stove top, extractor and large stainless sink as standard. Space for optional dishwasher. Generous cupboard and benchtop space throughout.
Liquor cabinet as standard or optional wine fridge.
Cockpit drinks fridge situated under window sill, under the servery bar to the cockpit.

FORWARD LOUNGE



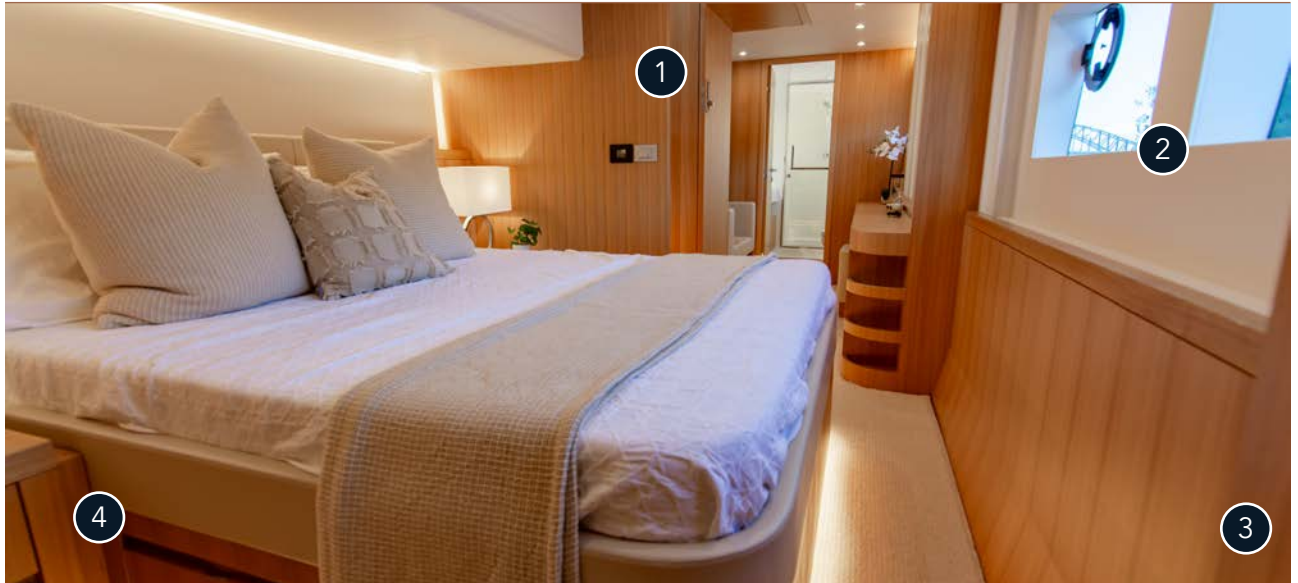
- 1** Forward lounge with facing sofas and floating coffee table with concealed stools.
- 3** Elevated sofa position for excellent views through the expansive saloon windows.
- 2** Opening hatch for excellent air flow through the main deck.

HELM STATION

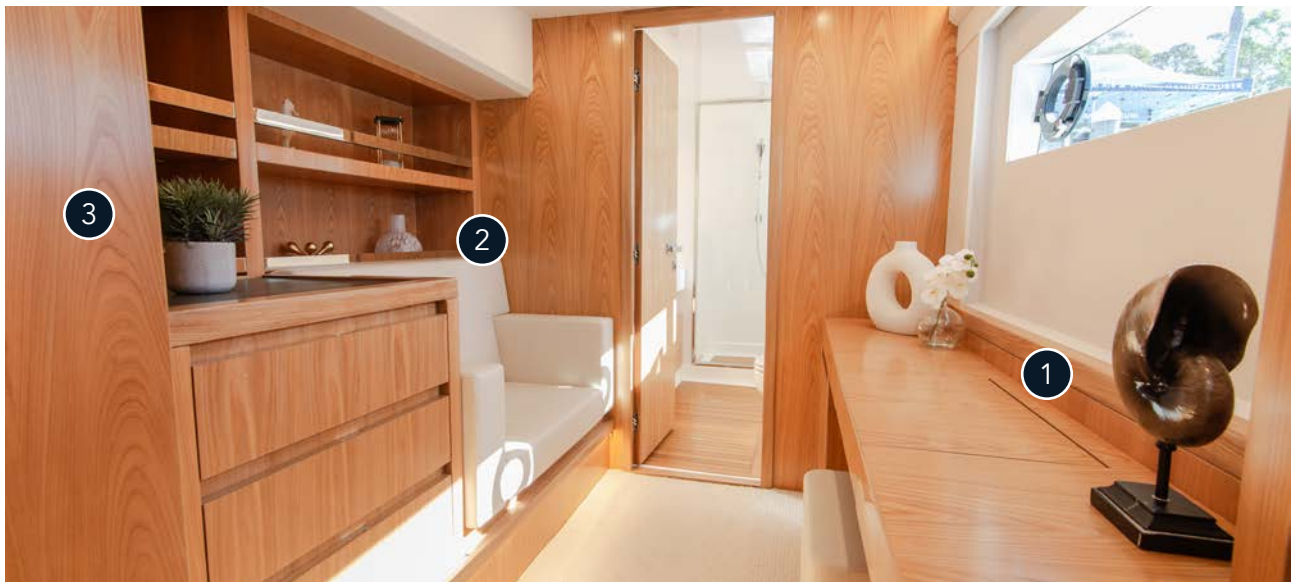


- 1** Standard helm station showing optional second 16" plotter.
- 3** Besenconi double helm seat.
- 2** Excellent all-round visibility for the helmsman.

MASTER SUITE



- 1 Master cabin extends the entire starboard hull with a full walk-around queen-sized bed.
- 2 Large hull windows for excellent views.
- 3 Wardrobe hanging lockers located aft of the master cabin.
- 4 Four spacious storage drawers concealed under the master bed.



- 1 Vanity table with concealed stool.
- 2 Sofa, bookshelves and additional storage drawers.
- 3 Sliding door to create exceptional privacy for master suite hull.

MASTER ENSUITE



- 1 Spacious vanity with double sinks and storage behind mirrors and below vanity top plus separate linen closet.
- 2 Electric freshwater flush toilet.
- 3 Generous walk-in shower with teak grate flooring.
- 4 Large windows for natural light and overhead hatch ventilation.

PORT AFT CABIN



- 1 Standard twin bed arrangement pictured, but this cabin can also be configured with a walk-around double bed design.
- 2 Private ensuite with walk-in shower.
- 3 Shelves in addition to ample draw and closet space.
- 4 Large windows for natural light and overhead hatch ventilation.

PORT FORWARD CABIN



- 1 Port forward cabin with double bed and adjacent single bed, making it ideal for guests of all ages.
- 2 Storage under the double bed, and additional shelf and closet space.
- 3 Hull window with opening portlight and deck hatch overhead for ventilation.
- 4 Private ensuite at cabin entry.



GUEST ENSUITES

- 1 Each guest cabin enjoys its own private ensuite featuring a vanity with storage behind overhead mirror and under sink, electric toilet, walk-in shower with teak grate flooring, and a hull window and overhead deck hatch for natural ventilation.

This document is effective at the date shown and replaces and delete any previous edition with the same topic.

To continually improve its models, ILIAD Catamarans reserves the discretion to produce on its own boats all the suitable variations, also in waiver to the specifications contained in brochures, guides, price lists, technical files, websites, advertising, media articles and in every other publication, without notice.

ILIAD Catamarans models are offered to the world market, and for this reason they can be equipped with standard and optional equipment that varies from region to region. The manufacturers and models of all the models' appliances, audio-visual and technical, hydraulic, electronic equipment etc presented in this document and in any other promotional material (brochures, price lists, technical files, websites, advertising, media articles, boat show material etc) are not binding as the manufacturers/suppliers of these products can modify or revoke the models at any moment without warning.

These products, installed on board by ILIAD Catamarans are selected by the company for their superior performance and quality, as well as on the basis of their availability on the market during the production of the boats. The characteristics and specifications presented are not contractually binding. Performance data is declared in good faith, however are purely approximate and indicative, and data is not legally binding with no guarantees given on speeds and fuel consumption due to various factors that can affect these performances (weather, loadings, sea state, fuel quality, propellor condition, and hull cleanliness etc).

The information, specifications and equipment stated in this document are subject to change without notice. This document is not contractual or legally binding.

Official ILIAD Catamarans dealers are listed on the company website at www.iliadcatamarans.com.