



BEKKERS  
YACHTS



AZUR 45<sup>HT</sup>



BUILT FOR  
THE EXCEPTIONAL



THE NEW  
BEKKERS YACHTS  
AZUR 45<sup>HT</sup>

DESIGNED BY  
SUPERYACHT AWARD WINNING  
RENÉ VAN DER VELDEN  
AND BUILT BY A DEDICATED TEAM  
WITH DECADES OF EXPERIENCE  
WITHIN THE SUPERYACHT INDUSTRY

THE RESULT:  
A NON-CONCESSION WEEKENDER  
WITH THE SUPERYACHT FEEL  
AND DETAILING



EXTERIOR  
LAYOUT  
AZUR 45<sup>HT</sup>



  
BEKKERS  
YACHTS



## MAIN DIMENSIONS

Length (L.O.A.):	13.30 m / 44.29 ft
Length (L.W.L.):	12.54 m / 41.14 ft
Beam:	4.32 m / 14.17 ft
Draught:	0.79 m / 2.59 ft
Displacement maximum:	16,600 kg / 36,596.74 US lb
Top speed:	30+ dep. on engine choice
Cruising speed:	20 knots
Cruising range:	248 nautical miles at 20 knots

Fuel capacity:	1240 liters / 327.57 US gal
Fresh water capacity:	278 liters / 73.44 US gal
Black water capacity:	165 liters / 43.59 US gal



UNWIND  
IN LUXURY

PREPARED FOR  
THE ADVENTURE

## HULL, SUPERSTRUCTURE

Hull shape:	Hard Chine
Hull material:	Aluminum
CE category:	RCD Category B

## ENGINES

- 2x Volvo Penta IPS 600 - 2x 440 hp
- 2x Volvo Penta IPS 650 - 2x 480 hp (opt.)
- 2x Volvo Penta IPS 700 - 2x 550 hp (opt.)
- 2x Volvo Penta IPS 800 - 2x 600 hp (opt.)



AZUR 45<sup>HT</sup>



**ALUMINUM HULL**  
ENGINEERED AND BUILT WITH  
SUPERYACHT STANDARDS

## THE BENEFITS OF OWNING AN ALUMINUM YACHT AT A GLANCE

### **Weight**

One of the biggest benefits of building an aluminum yacht is the performance output. Aluminum yachts are 30-40% lighter than fiberglass yachts of similar size. Due to the lower weight, aluminum yachts move more easily through water, making them faster and more efficient.

### **Reparability**

Aluminum yachts are much easier to repair than fiberglass yachts. Dents can often be pounded out with a hammer and, if necessary, sections of a plate can be cut out and be replaced.

### **Toughness**

Aluminum has great toughness. If you need a yacht that can withstand harsh conditions without breaking, aluminum is the best option. Aluminum yachts will resist more impacts, compared to fiberglass. Fiberglass will break, while aluminum will merely mark.

### **Maintenance**

Most maintenance work on aluminum requires rinsing the yacht and scrubbing. A fiberglass yacht requires waxing and polishing of the fiberglass gelcoat.



#### **Life span**

Aluminum yachts have a longer lifespan. An aluminum yacht can easily last 30-40 years with regular and low maintenance.

#### **Recycling**

Aluminum is an attractive metal for recycling in both energy and economic terms because it is 100 percent recyclable. And the manufacturing process is more environmentally friendly than fiberglass. Because aluminum requires less maintenance, it produces less secondary pollution.

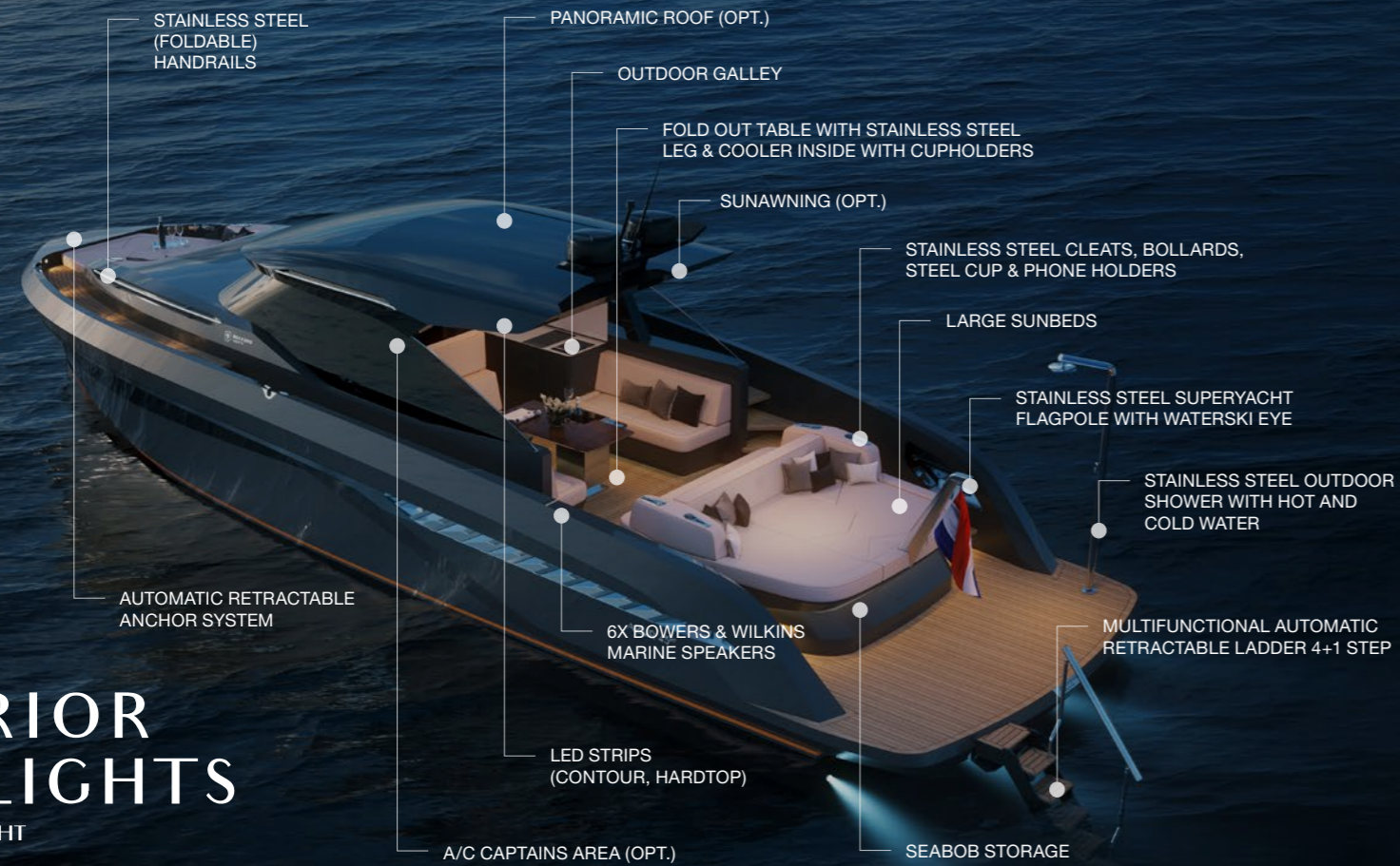
#### **Customization**

And then the last and perhaps the biggest benefit compared to fiberglass yachts is customization. Aluminum yachts are more customizable than fiberglass yachts. This is because fiberglass hulls are built from molds. This means that the shapes and features are standard and pre-determined.



# EXTERIOR HIGHLIGHTS

## AZUR 45<sup>HT</sup>



Topview with hardtop



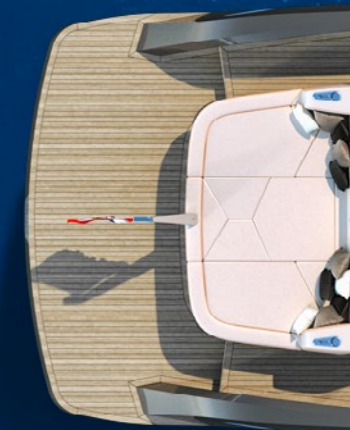
Deck layout



## HULL AND DECK

### Deck

- Deck and swim platform in flexiteak
- Stainless steel handrails on port and starboard side (opt. with LED strips)
- Stainless steel retractable handrails on port and starboard side
- Flush stainless steel cleats
- Stainless steel bollards
- Stainless steel cup & phone holders
- Multifunctional automatic retractable ladder 4+1 step
- Access to engine room
- Adjustable captain's bench
- Companionway in glass & stainless steel
- 2 sunbeds
- Fold out table with stainless steel leg & cooler inside with cupholders
- Standard fixed platform
- Panoramic roof (opt.)
- Sun awning (opt.)
- Shore power
- Fuel and Water tank refill access
- Compartments for fenders
- Automatic retractable anchor system
- Stainless steel outdoor shower with hot and cold water
- 2x Bowers & Wilkins Marine 4" speakers
- 2x Bowers & Wilkins Marine 6" speakers
- 2x Bowers & Wilkins Marine 8" speakers





## COCKPIT

### Control panel

- 2x GARMIN 17" touchscreens
- Adjustable stainless steel steering wheel
- Stainless steel cup & phone holders
- Volvo Penta IPS joystick
- 2x stainless steel air conditioning grilles
- Adjustable captain's bench
- Key-less start system





## WETBAR

### Galley

- Outdoor galley painted in hull color
- Stainless steel sink
- 85L fridge with stainless steel door
- BBQ or induction fire (both is possible in opt.)
- Ice maker (opt.)
- Drawer fridge under captain's bench (opt.)





Grigio Titanium Silver Satin hardtop with Navy Blue hull.



Nero Black hardtop with Ice Blue hull



Nero Black hardtop with Olive Green hull



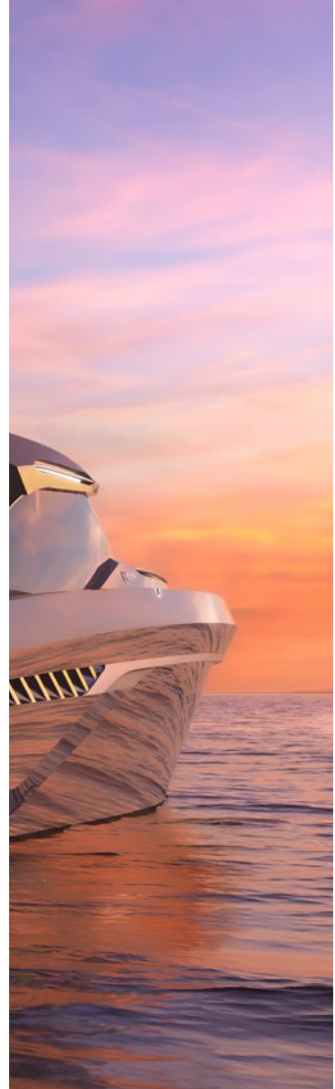
Grigio Titanium Silver Satin hardtop with Volcano Grey hull



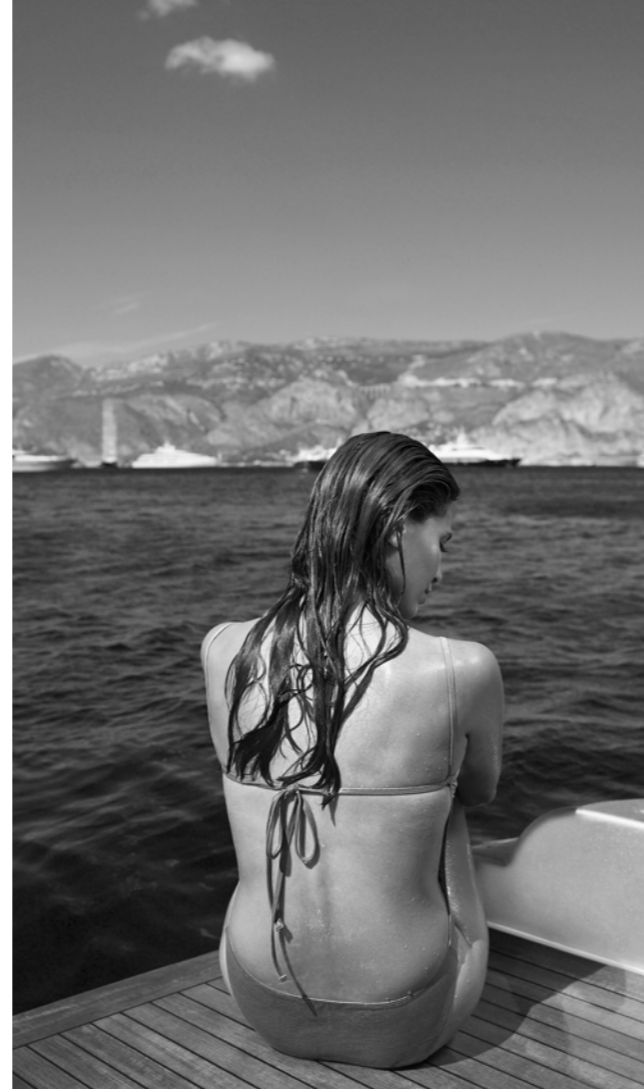
## PAINT TO SAMPLE

All color combinations mentioned are standard colors. Apart from these combinations, any custom color is possible on request.

Nero Black hardtop with Daytona Grey hull



QUALITY  
TIME  
AT SEA

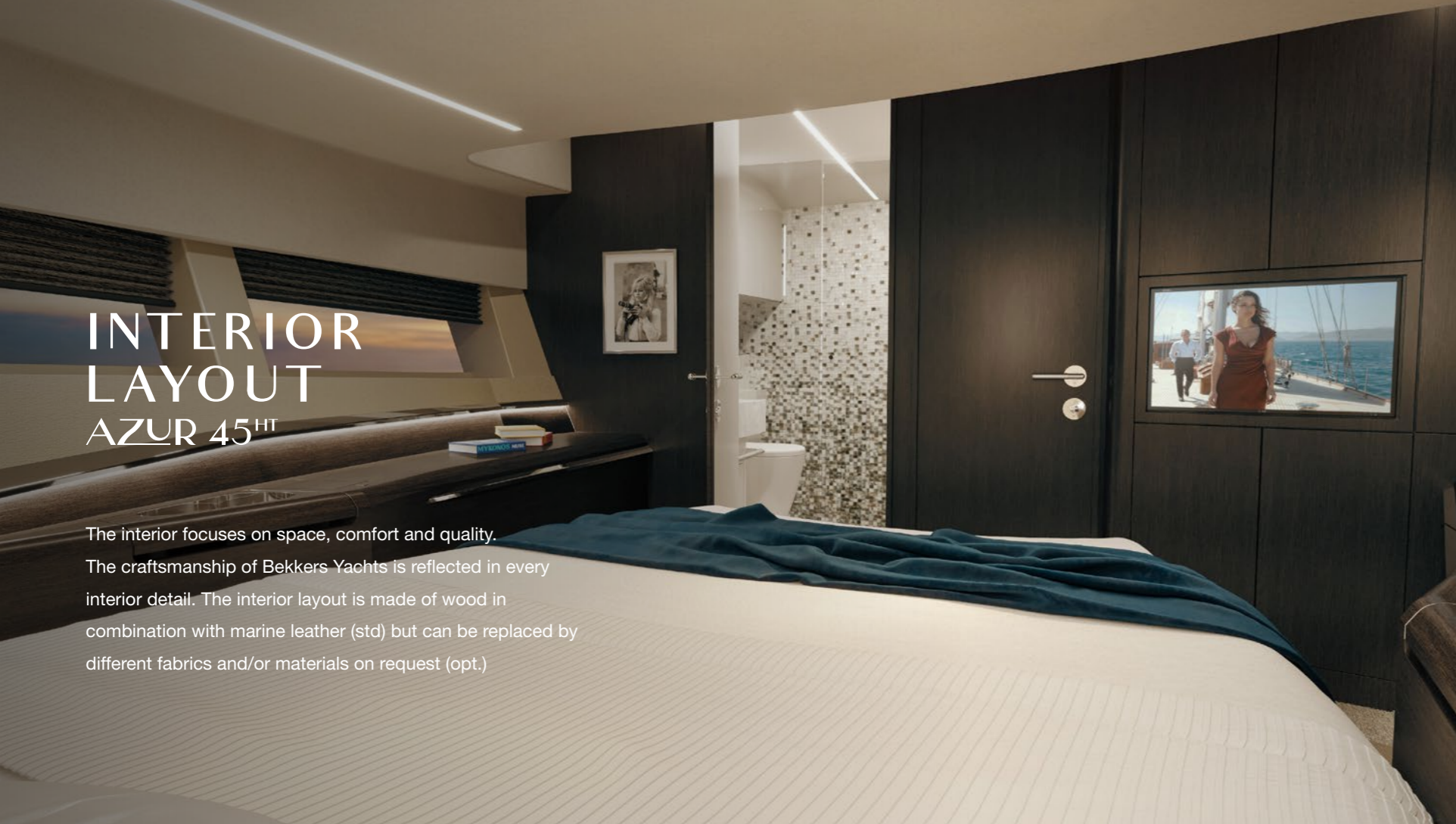


WHERE BEAUTY  
MEETS CULTURE  
*IBIZA*

# INTERIOR LAYOUT AZUR 45<sup>HT</sup>

The interior focuses on space, comfort and quality.

The craftsmanship of Bekkers Yachts is reflected in every interior detail. The interior layout is made of wood in combination with marine leather (std) but can be replaced by different fabrics and/or materials on request (opt.)



  
**BEKKERS**  
YACHTS



## MAIN CABIN

- Large berth with customizable Hespera circular mattress
- Hidden slide-out safe
- 26" mirror TV (opt.)
- Main closet
- 4 clothes drawers
- Tinted glass skylight
- Tinted panoramic glass on port and starboard side



- LED contour lighting
- Mirror
- 2x Reading lights
- Dimmable LED strips in ceiling
- Automatic blinds
- 2x 230 V socket with USB port
- A/C and heating system (opt.)

# MAIN CABIN

## AZUR 45<sup>HT</sup>

26" MIRROR TV



AUTOMATIC BLINDS

HIDDEN SLIDE-OUT SAFE

LARGE BERTH WITH  
CUSTOMIZABLE HESPERA  
CIRCULAR MATTRESS



Interior layout



## BATHROOM

- Electric soft close seat toilet
- Glass shower door
- Corian sink with hot & cold-water faucet
- Mirror with LED strips
- Shower box with hot & cold-water mixer rain & hand shower
- Access to utility room





## GUEST CABIN

- Large berth
- 26" mirror TV (opt.)
- Main closet
- Tinted panoramic glass on port side
- 2x Reading lights
- Dimmable LED strips in ceiling
- Stainless steel stairs with LED lighting
- LED contour lighting
- Automatic blinds
- 2x 230 V socket with USB port
- A/C and heating system (opt.)





THE  
AMERICAN  
RIVIERA  
*MIAMI*



DISCOVER  
ENDLESS  
POSSIBILITY



AZUR 45<sup>HT</sup>



## SYSTEMS

### Engine

- 2x Volvo Penta IPS 600 - 2x 440 hp
- 2x Volvo Penta IPS 650 - 2x 480 hp (opt.)
- 2x Volvo Penta IPS 700 - 2x 550 hp (opt.)
- 2x Volvo Penta IPS 800 - 2x 600 hp (opt.)
- Volvo Clear Wake system
- Volvo Penta IPS Joystick
- Volvo 7" touchscreen
- 2x Garmin 17" touchscreen
- Engine room with soundproof isolation
- 2x plastic fuel tank
- Automatic fire extinguisher system
- Key-less start system
- Gyro stabilizer (opt.)
- Superyacht standard isolation plan

### Tanks

- Fuel tank capacity: 1240 liters
- Fresh water capacity: 278 liters
- Black water capacity: 165 liters
- Boiler capacity: 50 liters

### Engine room

- 24V shore power
- Fisher Panda generator 10000i 230V (opt.)
- Fire extinguisher

### Bilge pumps

- Electric circuit 24V
- 2 or 3 electric pumps with automatic level switch and manually on the dashboard

### Battery

- 24V electric control panel
- Shore power 32 Amp incl. 25 m cable
- 2x Lithium-Ion 280Ah
- 4x start batteries

### Battery charger

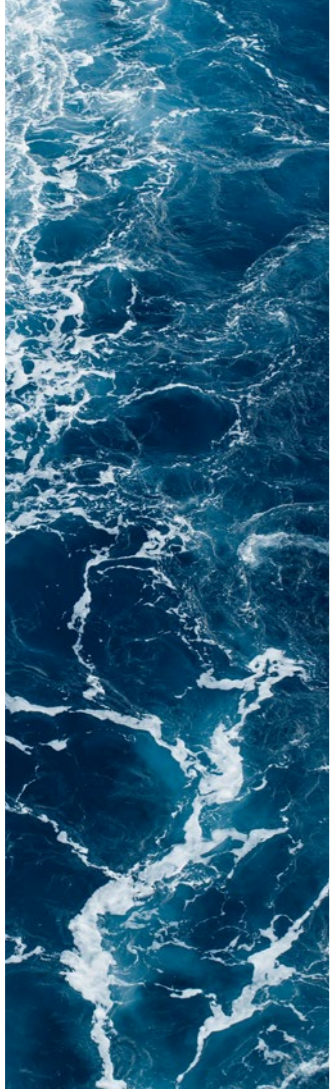
- 24V battery charger, 8000W
- Main battery switch

### Entertainment

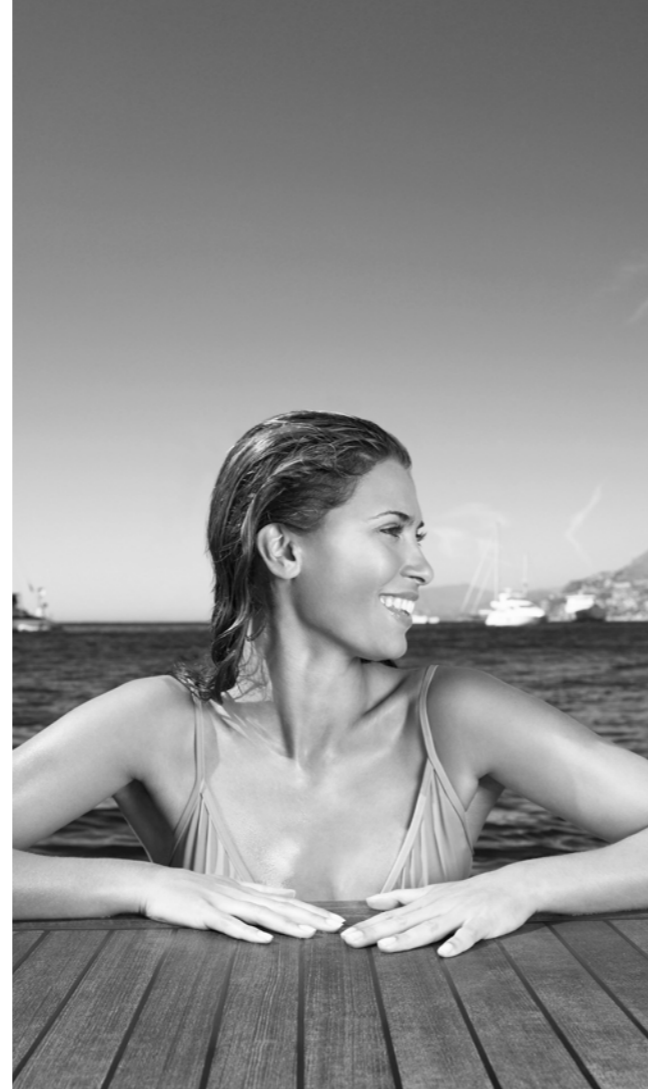
- 2x 26" mirror TV (opt.)
- 2x Bowers & Wilkins Marine 4" speakers
- 2x Bowers & Wilkins Marine 6" speakers
- 2x Bowers & Wilkins Marine 8" speakers

### Air conditioning

- Webasto CM20M (opt.)
- 3x Webasto Fancoil units (opt.)



EXPLORE  
YOUR  
WORLD  
AT SEA



LUXURY  
HOTSPOT  
*SAINT TROPEZ*



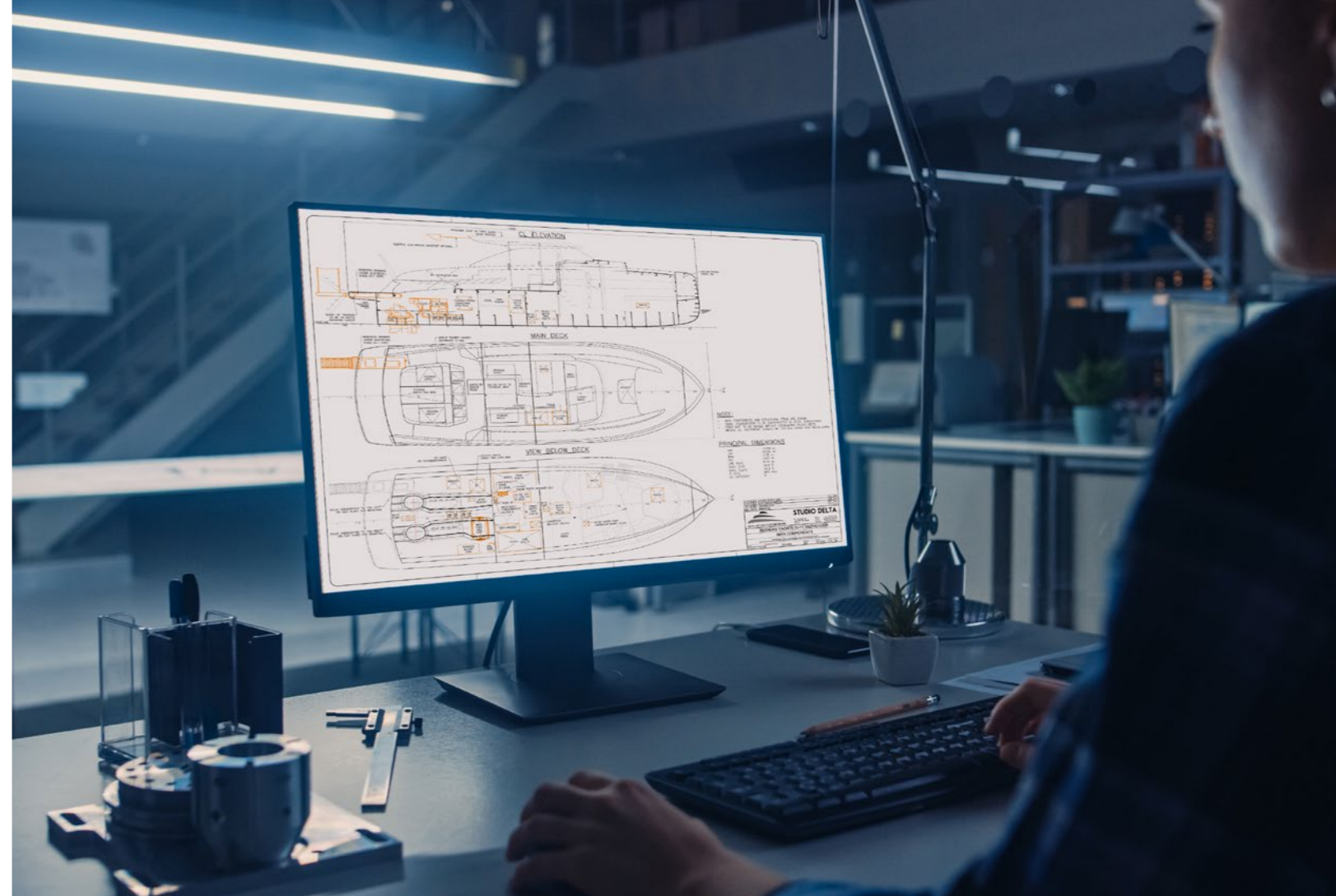
DUTCH  
CRAFTSMANSHIP

STYLISH  
IN EVERY  
DETAIL





DESIGNED  
FOR  
PERFECTION



AZUR 45<sup>HT</sup>



**BEKKERS**  
YACHTS

[welcome@bekkersyachts.com](mailto:welcome@bekkersyachts.com)

[bekkersyachts.com](http://bekkersyachts.com)

Industrieweg 7  
5158 NJ Heesbeen  
The Netherlands

Sales contact  
Leon Bekkers  
+31 6 49 38 67 60